



GMT MONTHLY MEMBERSHIP PROGRESS REPORT

Results as of: 10/31/2023

Multiple District 3233

LOCATION: INDIA

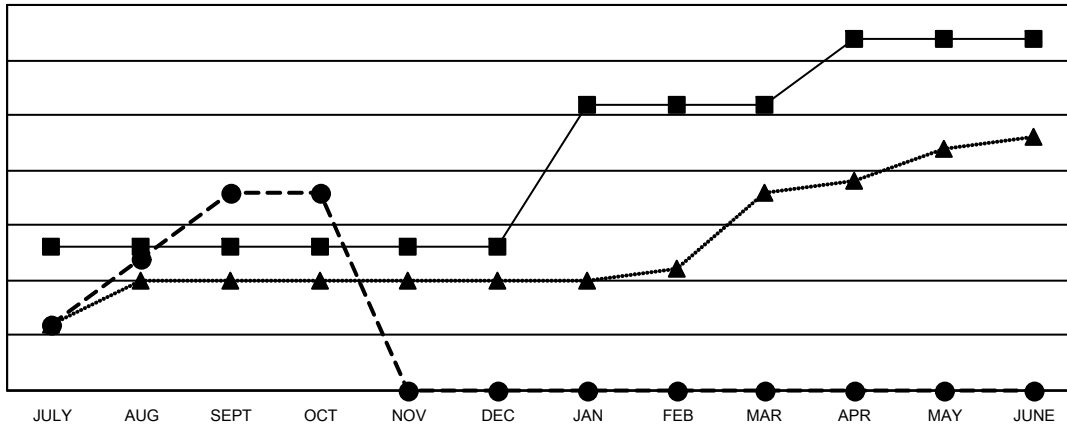
GMT: OPEN

GMT CA 6 - I

Clubs			
RESULTS FOR 2023-2024			
QUARTER	NEW CLUB GOAL	NEW CLUBS	DROPPED CLUBS
JULY/AUG/SEPT	13	18	6
OCT/NOV/DEC	0	0	3
JAN/FEB/MAR	13	0	0
APR/MAY/JUNE	6	0	0

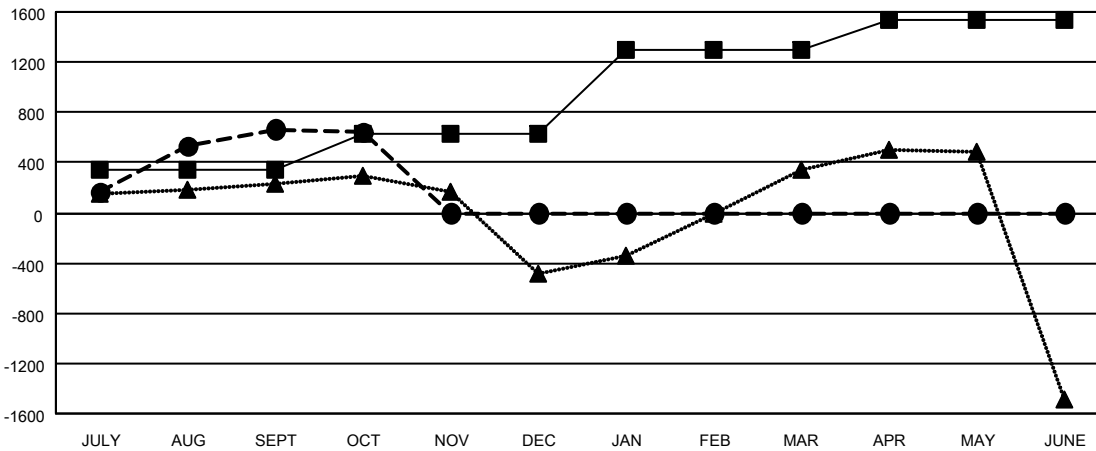
Members			
RESULTS FOR 2023-2024			
QUARTER	MEMBER GROWTH NET GOAL	MEMBER GROWTH ACTUAL	DROPPED MEMBERS ACTUAL (including transfers)
JULY/AUG/SEPT	340	1,500	609
OCT/NOV/DEC	285	64	84
JAN/FEB/MAR	670	0	0
APR/MAY/JUNE	245	0	0

GOALS AND ACTUAL NEW CLUBS CUMULATIVE



- - CURRENT YEAR GOALS FOR NEW CLUBS
- - CURRENT YEAR ACTUAL NEW CLUBS
- ▲ - LAST YEAR ACTUAL NEW CLUBS

GOALS AND ACTUAL MEMBERS CUMULATIVE



- - MEMBER GROWTH NET GOAL
- - MEMBER GROWTH ACTUAL
- ▲ - LAST YEAR MEMBERSHIP ACTUAL

DROPPED CLUBS: 9	259 CLUBS OF 822 ADDED 1 OR MORE NEW MEMBERS	GENDER DISTRIBUTION
		MALE 14,127 (68.48%)
		FEMALE 6,502 (31.52%)
DROPPED MEMBERS	CLICK HERE FOR CUMULATIVE MEMBERSHIP DATA	TOTAL FAMILY UNIT MEMBERS 9,091
DECEASED 12		FAMILY MEMBERS PAYING HALF DUES 5,362
CLUB CANCELLED 70		
OTHER 612		
TOTAL 694		